

These are the benefits

- Enforce best print practises
- Introduce color printing without compromising your budget
- Easy to manage and maintain
- Scalable and enterprise-ready
- Supports the patented SafeCom Pull Print technology

SafeCom Rule Based Printing (RBP) allows print cost savings by offering management a method of enforcing policies for printing.

Today printers and MFPs with color capabilities are available in most companies, but management is lacking efficient means to ensure that only relevant material is produced in color (can be up to 8 times more expensive than b/w). Management may also want additional cost savings for b/w prints by forcing duplex printing and toner save where relevant.

An important aspect of the policies is: Who should be subject to the different policies? Users dealing with marketing and business communication are normally allowed to print in color to increase recognition and readership, whereas others may not be allowed to print in color at all, and others again can print in color, but whenever they do so, they are made aware of the extra cost by a popup message.

How does it work

The policies are formulated as one or more rules. Rules are assigned to groups of users. It is possible to construct rules like:

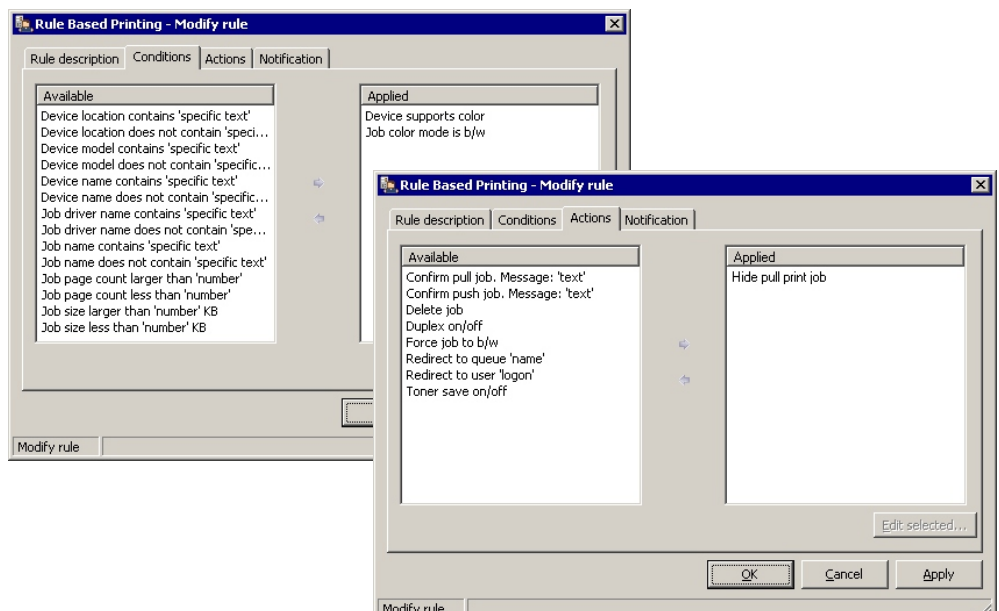
- Only color jobs can be Pull printed on color devices
- Print e-mail as b/w and with toner save
- Color print not allowed
- Allow color print, but inform about cost

A rule is composed of three parts: 1) Condition, 2) Action and 3) Notification. This is best demonstrated with two examples.

The first example deals with e-mails. The condition says the document title (job name) must match outbind://. The action is to modify the job by forcing it to b/w, enable toner save and force double-sided printing. In this example there is no notification to the user.

The second example deals with color printing. The condition is that color printing is not allowed. The action is to delete the job. The user is notified so he knows not to print in color in the future.

Rules can be applied on groups of users. Existing user grouping can be imported from Windows and used in connection with SafeCom Rule Based Printing.



SafeCom a/s
Energivej 15
DK-2750 Ballerup
Denmark

Phone: +45 4436 0240
Fax: +45 4436 0248
E-mail: info@safecom.eu
Web: safecom.eu

System Requirements

Server

Windows 2003 and 2000. SafeCom License key code. Recommended: 1 GHz CPU and 1 GB RAM. 5 GB of free disk space.

Web Interface

Internet Information Service (IIS) version 6.0 or 5.1.

Database

The free Microsoft SQL Desktop Engine (MSDE) is distributed with SafeCom. In a SafeCom Enterprise (multi server) installation the master server must run Microsoft SQL Server on either a Windows Server 2003 or a Windows 2000 Server.

Client

Windows Vista, XP, 2003, 2000, NT 4, 98 and clients running Citrix and Windows Terminal Service. Recommended: 1 GHz CPU and 512 MB RAM. 1 GB of free disk space.

Identification Methods

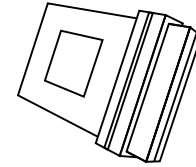
Pull Print requires users to be identified at the printer. Please contact us to hear about other methods than those below:

- User code (alphanumeric)
- Magnetic Card (Track 1, 2 & 3)
- Casi Rusco Proximity Card
- Cotag Proximity Card
- Deister Proximity Card
- EM41xx Proximity Card
- HID Proximity Card
- HITAG Proximity Card
- Indala Proximity Card
- IoProx Proximity Card
- Legic Proximity Card
- Mifare Proximity Card
- NEDAP Proximity Card
- TITAN Proximity Card
- UNIQUE Proximity Card

Solutions for printers & MFPs

External solution

Any printer with a parallel port (IEEE 1284) or network connection can be SafeCom-enabled with the SafeCom Controller and a standalone card reader or SafeCom Color Front-end (touch-screen with built-in card reader).



SafeCom Go

SafeCom Go is the internal solution where the user interface is integrated into the printer's menu structure. SafeCom Go is available for:

- HP
- Ricoh/NRG
- Sharp
- Xerox

See the list of supported devices on safecom.eu.

Copy Control on MFPs

Copy Control is supported on selected MFPs from these manufactures:

- Canon
- HP
- Konica Minolta
- Kyocera Mita
- Océ
- Ricoh
- Sharp
- Xerox

The MFP must be networked and in most cases you need a special SafeCom MFP cable.

Characteristics

- Easy administration as rules can be applied on a group basis.
- Server-based implementation for best performance.
- Integrated rule editor.
- Full control through prioritized rules.
- Separate and centralized Rule Based Print engine allows easy update.
- Support PCL5, PCL5c, PCL5e, PCL6 or PostScript level 2 or 3.
- Builds on and supplements existing and proven SafeCom technology.

Areas of Application

- Any company or organization that wishes to enforce cost saving printing practices.
- Any company or organization that wants to ensure that only relevant material is printed on their color printers and MFPs. Easy administration as rules can be applied on a group basis.

Disclaimer

- SafeCom Rule Based Printing needs to modify the print data stream to control: Duplex on/off, Toner save on/off and Force job to b/w. SafeCom does NOT guarantee that these modifications will work and cannot be held responsible if they do not work as expected.

P/N	Product name	Comments
211 010	SafeCom Tracking	- Licensed per device
212 010	SafeCom Rule Based Printing	- Licensed per device, requires SafeCom Tracking
213 010	SafeCom Client Billing	- Licensed per device, requires SafeCom Tracking
214 010	SafeCom Pay	- Licensed per device, requires SafeCom Tracking
215 010	SafeCom Pull Print	- License per device
216 010	SafeCom Encryption	- Licensed per device, requires SafeCom Pull Print